

Ariel In&Out F Wall Washer

Downlights | IP40 | Class III | Dimmable

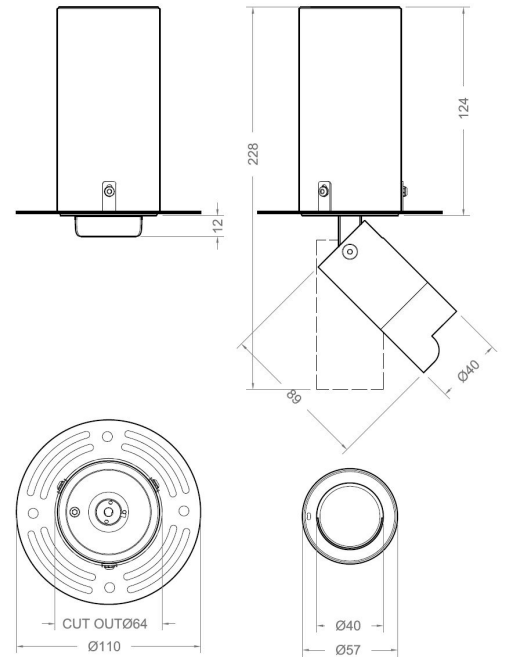


Fixing
frame



+

Module



LIGHT SOURCE & OPTIC

Power

9W
13W

Lens

Wall washer

Beam Direction

Adjustable:
Tilting +/-90°, rotating +/-355°,
Asymmetrical

Material

PMMA

LED quantity

1

Binning

2 MacAdam steps

Color temperature & quality

2200K CRI>90
2400K CRI>90
2700K CRI>90/95
3000K CRI>80/90/95
3500K CRI>90/95
4000K CRI>90

Lifetime

(L70) >77.000 hrs

FIXTURE

Dimensions

Ø 110mm x H 124mm

Material

Aluminium

Body finishes

Warm White (RAL 9010)
White (RAL 9003)
Gray White (RAL 9002)
Gothic Cement (RAL 7033)
Gray (RAL 7012)
Beige Gray (RAL 7006)
Brown (RAL 8019)
Black (RAL 9005)

Weight

530gr

Mounting

Recessed: cut out Ø 64mm

Fixing

Fixing frame for trimless flush mount

Working temperature

-20° / +40°

ELECTRICAL FEATURES

Power supply

Constant current:
500 mA
700mA
Typical Vf= 18V

Driver requirement

Remote (not included)

Control

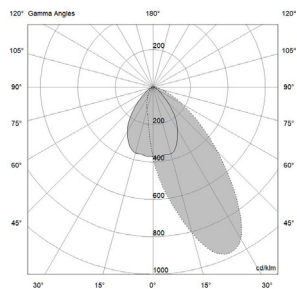
On/off
Push switch
Phase Cut
0/1-10 V
Casambi
DALI

Ariel In&Out F Wall Washer

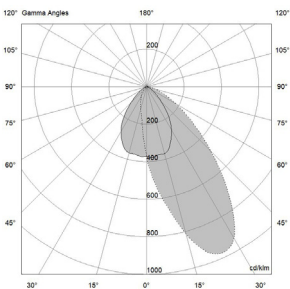
PHOTOMETRIC DATA (3000K CRI>90)

9W - WW | UGR 33

13W - WW | UGR 34



H (m)	D (m)	Eav (lx)
1	1.55	188
2	3.10	47
3	4.64	21
4	6.19	12
5	7.74	8



H (m)	D (m)	Eav (lx)
1	1.55	243
2	3.10	61
3	4.65	27
4	6.20	15
5	7.75	10

Total lumen output
753 lm

Efficacy
84 lm/W

Total lumen output
975 lm

Efficacy
75 lm/W

Ariel In&Out F Wall Washer

INSTALLATION ACCESSORIES

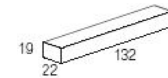
Fixing rame (A00654._0)


Necessary element: please specify always 1 frame for each Fixture in the purchase order

SUGGESTED REMOTE DRIVERS

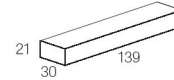
On/Off :

CC10-F-500-SI



 Ø 28

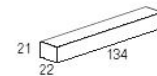
CC23-F-700-SP



 Ø 37

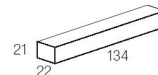
Multifunction (DALI 2, 0/1-10V, PUSH RIPPLE FREE, AM DIMMING):

CC15-D-500-S



 Ø 30

CC15-D-700-S



 Ø 30

Other options upon request